

PREMIUM CARRIER SYSTEMS 2017/18



Atera

ATERA CARRIER SYSTEMS
STAND FOR HIGHEST DEMANDS,
TECHNICAL INNOVATION,
AND FUNCTIONAL AESTHETICS.

PREMIUM QUALITY IN THE MANUFACTURING OF CARRIER SYSTEMS

- BICYCLES
- SKIS AND BOARDS
- KAYAKS AND SURF BOARDS
- ROOF BOXES
- RACKS OF THE WORK SERIES

PREMIUM QUALITY IS OUR WAY FORWARD.

Dear Atera Customer,

To strike new paths, you've got to think in all directions.
Beside new and improved functions are safety and usability for
sure the most important requirements on the features of Atera products.

The safety-related components and appropriate selection of materials
exceed by far the standard requirements and specifications.
Atera carriers are intuitive in handling. The mounting is straightforward.

Our bike rack Giro AF+ is equipped with new wheel holders. With the "plus"
it masters plus tyres up to 3.0 inch width as well as all smaller tyre sizes.
After the initial set-up the bike will find its ideal position automatically
and won't roll back and forth. With the Atera Wheel Protection the wheels
are protected against deformation.

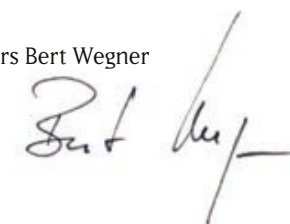
Further novelties:

- Some accessories for commercial vehicles are now available
for the quick mounting to the T-tracks of aluminium and aero profiles.
- The line-up of the Atera Certo Design roof boxes has been completed
by the exclusive looking Titanium model with its fine structured surface.
- Last but not least: The Atera Signo Roof Racks are state of the art and
are completed permanently with applications for new vehicles.

Our engineers are working on new future-oriented products.
For Atera applies now as well as in future: A clear focus on precision,
premium quality and innovation in every product.

That is what matters.

Yours Bert Wegner



Atera GmbH · Im Herrach 1 · 88299 Leutkirch im Allgäu
info@atera.de · www.atera.de

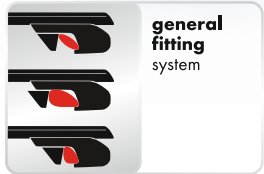
Atera

ATERA CARRIER SYSTEMS.
THE PERFECT CONNECTION
TO THE VEHICLE DESIGN.



Editorial	page 3
ATERA BASIC	
Roof racks Signo clamping roof bars / Signo fix point roof bars / Signo special roof bars	6 - 7
Roof bars for raised and flush-mounted roof rails Signo RT / RTD / Aero Profile	8 - 9
ATERA SPORT	
Bicycle roof carrier Giro AF+	10 - 11
Bicycle- / racing bike roof carrier Giro Speed / Giro front wheel holder	12 - 13
Bicycle rear carrier Linea for estates / station wagons, transporters and vans / extension kits	14 - 15
Bicycle rear carrier for tow bars Strada	16 - 21
Strada DL / Strada Sport M / Strada E-Bike M / Strada E-Bike ML / extension kits	18 - 19
Strada Evo / Strada Vario / extension kits	20 - 21
Roof boxes Cargo, Certo, Certo Design, Formula / roof box lift	22 - 25
Ski- and snowboard carriers Nova	26 - 27
Water sport equipment carriers for boats / surfboards / kayaks	28 - 29
ATERA WORK	
Carrier systems for heavy duty / high roof / raised roof / fix point / load basket	30 - 31
Accessories high angle bracket / angle bracket / lateral support bracket / cross connector / ladder holder / roller / universal gripper	32 - 33
ATERA ACCESSORIES	
Lashing strap / tensioning ratchet / distance holder / lock sets	32 - 33
Signs of transport competence	35

ROOF RACKS



SIGNO

The perfect fit for each car

Signo stands for precision and stability and provides the solid platform for the Atera Sport carriers and the Atera Work programme. The swivelling support feet ensures the perfect horizontal alignment of the cross bars to each other – a special design achievement, which clearly shows that Atera sets a high value on optimal transport conditions and clean design.

The integral design of the Signo series is the ideal partner for any type of vehicle. The Signo range provides the perfect match for any vehicle whether rail, fix point, clamp mounting or even for extreme roof heights. Signo roof racks are preassembled and ready to fit – even technically inexperienced people are able to mount the carriers safely and precisely.

Key benefit

Due to the unique coded Atera key no additional tools are required to mount the system. At the same time - like any key system, the coded Atera keys have different codes, which protects the roof rack against theft.

SIGNO RAIL RACK

For all vehicles with open roof rails. To find the matching roof rack, please check out our product finder on our web site www.Atera.de or our printed application list.

- Preassembled and ready to use out of the box
- Extreme low height
- Top only 50 mm above the rail
- Longer or shorter bars are available should you change to a wider or narrower vehicle
- Loading width from 110 to 150 cm
- Compatible to rail sizes from 15 to 55 mm
- Rubber padded clamping
- Mounting with Atera coded key
- Protected against theft by the coded Atera key
- For steel bars, 32 x 20 mm
- For aluminium bars 57 x 30 mm

SIGNO CLAMPING RACKS

For fixation in the door area. To find the matching roof rack, please check out our product finder on our web site www.Atera.de or our printed application list.

- Preassembled and ready to use out of the box
- Made-to-measure
- Loading width from 110 to 150 cm
- Car paint protecting, coated clamping plates
- Protected against theft by the coded Atera key
- For steel bars, 32 x 20 mm
- For aluminium bars 57 x 30 mm

SIGNO FIX POINT RACKS

For cars with pre-installed fixing points. To find the matching roof rack, please check out our product finder on our web site www.Atera.de or our printed application list.

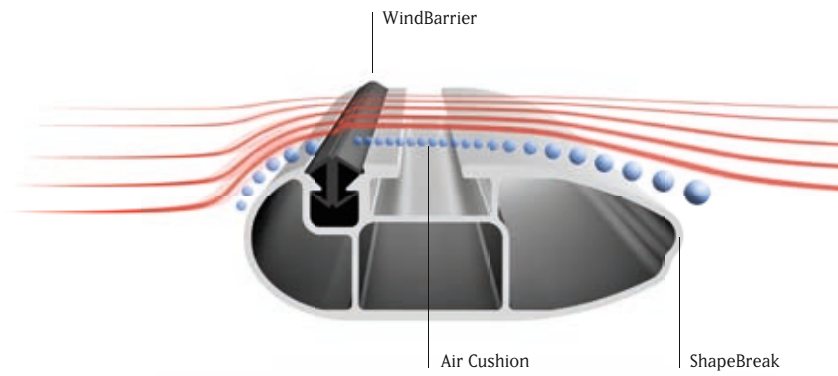
- Preassembled and ready to use out of the box
- Made-to-measure
- Loading width from 110 to 150 cm
- Car paint protecting, coated clamping plates
- Protected against theft by special screws
- For steel bars, 32 x 20 mm
- For aluminium bars 57 x 30 mm

SIGNO SPECIAL RACKS

For cars with integrated roof rails. To find the matching roof rack, please check out our product finder on our web site www.Atera.de or our printed application list.

- Preassembled and ready to use out of the box
- Made-to-measure
- Loading width from 110 to 150 cm
- Car paint protecting, coated clamping plates
- Protected against theft by the coded Atera key
- For steel bars, 32 x 20 mm
- For aluminium bars 57 x 30 mm

RAIL RACKS



SIGNO RTD/RT

Stylish, elegant and subtly integrating with modern vehicle designs, the Signo RT and Signo RTD fit perfectly on the roof, straight out of the box. The Atera Signo RT and Signo RTD are the solid platform for anything you want to carry.

With the Aero Profile Atera sets a new benchmark. The reduced air drag and fuel consumption are impressive as well as the further developed stability and safety.

AERO PROFIL

The Aero Profile bars are not only handsome to look at and very easy to use, but are at the cutting edge of design and engineering. Instead of using the standard rain drop shape, we have introduced at the trailing edge of the bar a special designed 'ShapeBreak' that controls the airflow in a favourable way. At the same time the ShapeBreak improves the stability of the cross bar and helps to keep its weight low.

The 'WindBarrier' is a deflector for the air flow and is an important element, with its origin in aeronautics. The WindBarrier creates small swirls, forming an air cushion on the surface of the cross bar which acts as a bridge for the airstream above the T-Slot, preventing the development of noise under all driving conditions.

Even when unloaded it isn't necessary to cover the T-Slot to prevent noise!

SIGNO RTD for roof rails with outer clamping ridge

The new Signo RTD is the most compact bar available for this type of roof rail. It universally adjusts to the shape of many flush mounted roof rails.

The perfect fastening torque is achieved by use of the Atera torque wrench with T-handle. The roof rail itself is well protected by the rubber liners.

The Aero Profile is compatible with all Atera accessories.

Technical features:

- Preassembled ready to use out of the box
- Perfect fit to flush mounted rails
- Atera torque hex wrench
- Payload 100 kg (please observe the roof load of the vehicle)
- Cross bars: from 110 - 150 cm
- Theft protected by cylinder lock
- Clamping jaws with rubber liners
- Steel cross bars version, 32 x 22 mm
- Aluminium Aero Profile version, 79,5 x 28,4 mm



SIGNO RT for raised roof rails

With its stylish design the Signo RT is neatly integrating to the vehicle design. Its universally fits to nearly all vehicles with raised roof rails.

The mounting to the vehicle is very simple: Just put the preassembled Signo RT on the roof rails. Adjust the width without tools by sliding the feet in the slot in the cross bar. The fixation of the width and at the rail is done at the same time. The perfect fastening torque is achieved by use of the Atera torque hex wrench with T-handle.

The Aero Profile is compatible with all Atera accessories.

Technical features:

- Preassembled ready to use out of the box
- Perfect fit to flush mounted rails
- Atera torque hex wrench
- Payload 100 kg (please observe the roof load of the vehicle)
- Cross bars: from 110 - 150 cm
- Theft protected by cylinder lock
- Clamping jaws with rubber liners
- Steel cross bars version, 32 x 22 mm
- Aluminium Aero Profile version, 79,5 x 28,4 mm



BICYCLE ROOF RACKS



NEW

GIRO AF+

Focus on Know-How

The new Giro AF+ is the answer to the individual requirements of bikers. Bikes from 20 to 29 wheel size. Big or small frame diameters. The Giro AF+ masters plus tyres up to 3.0 inch width as well as all smaller tyre sizes. A solid carrier with international design award.

Wheel Protection

"Competence in professional cycling". It's appropriate for Atera to advertise this headline. Other suppliers pay little attention to the protection of the goods being carried, but Atera particularly cares for this. The Atera wheel holders are deliberately formed like wheel-chocks in order to eliminate the enormous lateral, drag and shear loads. Thus the wheels are protected against any damage – a small detail with a big effect.



Tensioning lever for easy and safe tensioning – with overload protection.

Tensioning lever up – Wheel secured.

Tensioning lever down – Wheel released.

The fast lock on bike frames

The Giro AF+ holds round frames from 22 to 80 mm and oval frames up to 100 x 80 mm. Holding function: After the bike comes to rest between the wheel holders, the bike leans against the open clamping head, holding itself in a vertical position before the clamp is shut.



The Giro AF+ masters plus tyres up to 3.0 inch width as well as all smaller tyre sizes.

GIRO AF+

ITEM NUMBER: 082 227

Bicycle roof rack made of matt anodized aluminium with automatic holding function.

- For all regular tyre sizes, including 3.0" wide Plus-Tyres
- Strong interchangeable ratchet strap
- With Wheel Protection
- Preassembled and no pre-adjustment required
- No tools required
- Comfort clamping system
- Easily changed from right hand to left hand mounting
- Holds round frames from 22 to 80 mm
- Holds oval frames up to 100 x 80 mm
- Wheel holders with tensioning ratchet & quick release
- Theft protection for bike and carrier
- Maximum bike weight: 17 kg
- Made out of aluminium
- For steel cross bars, 32 x 22 mm
- For all aluminium cross bars
- Not suitable for e-Bikes
- City Crash certified



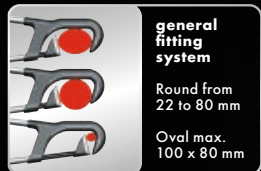
wheel protection



city crash certified



3 years warranty



general fitting system

Round from 22 to 80 mm

Oval max. 100 x 80 mm

RACING BIKE ROOF RACKS

GIRO SPEED



Pure Profession

The professional bicycle carrier with an impressive design for racing bikes or mountain bikes. With the Giro Speed everything is all about speed. Mounted within seconds, the fork fixing and the "Wheel Protection" wheel holder will put you in high-speed to the road.

Turn – push – ready!
The Giro Speed offers additional performance related features; important to professional bikers: lightweight and safety.



GIRO SPEED

ITEM No.: 082 221
Bicycle roof rack with fork fixation for racing and or mountain bikes also suitable for disk brakes.

- safe and quick fixation
- "Wheel Protection" wheel holder for the back
- anodized aluminium V-rail
- completely preassembled
- no pre-adjustment required
- no tools required
- anti theft protection
- for steel cross bars 32 x 22 mm
- for all aluminium cross bars
- City Crash and TÜV tested
- please consult the manufacturer before using with carbon forks
- not suitable for thru bold axles



GIRO FRONT WHEEL HOLDER

ITEM No.: 082 223
Accessory for the Giro Speed. Also suitable for bikes with disk brakes.

- theft retarding screws
- matt anodized aluminium
- completely preassembled
- for steel cross bars 32 x 22 mm
- for all aluminium cross bars
- not suitable for thru bold axles

BICYCLE REAR CARRIERS

LINEA

Transport competence

Linea shows bike transport competence in every detail. Wheel holders with "Wheel Protection". Lockable bike frame holders with rotating joints accommodate diameters from 30 to 80 mm. The frames and tubes are made of top quality anodized aluminium or stainless steel.

For a versatile range of vehicles

Linea is designed for vans, transporters, estates, ... vehicles with tailgates. Simple mounting without drilling.

The Linea sets consists of the carrier base and the vehicle specific mounting kit. The specific mounting kit ensures a perfect and simple fit. At vehicle changes it is sufficient to replace the mounting kit, when the vehicle is within the same class. Linea can be extended with additional bike rails.

Exceptions are the VW T4 / T5 / T6 models, which are delivered completely preassembled.



To find the vehicle specific mounting kits, please check out our productfinder on our web site www.atera.de or our printed application list.



LINEA 2 FOR ESTATE / HATCH BACK

ITEM No.: 024 501

Carrier base made of anodized aluminium. Vehicle specific mounting kit required.

- width: 1,31 m
- completely preassembled
- supplied as standard with 2 bike rails
- two lockable distance holders
- wheel holder with quick fix
- coded key theft protection
- optional third bike rail

LINEA 2 VAN / TRANSPORTER

ITEM No.: 024 503

Carrier base made of anodized aluminium. Vehicle specific mounting kit required.

- width: 1,31 m
- completely preassembled
- supplied as standard with 2 bike rails
- two lockable distance holders
- wheel holder with quick fix
- coded key theft protection
- optional third bike rail

LINEA 3 VAN / TRANSPORTER

ITEM No.: 024 500

Carrier base made of stainless steel and anodized aluminium. Vehicle specific mounting kit required. Bike rails.

- width: 1,31 m
- completely preassembled
- supplied as standard with 3 bike rails
- three lockable distance holders
- wheel holder with quick fix
- coded key theft protection
- optional fourth bike rail

EXTENSION KIT FOR 3RD BIKE

ITEM No.: 024 550

Extension for Linea 024 501 / 024 503. Bike rail with lockable distance holder. Uses existing fixing points on the carrier base. Extension for Linea all-in-one systems VW T5 024 707



EXTENSION KIT FOR 4TH BIKE

ITEM No.: 024 551

Extension for Linea 024 500. Bike rail with lockable distance holder between the 3rd and 4th bike. Uses existing fixing points on the carrier base. Extension for Linea all-in-one systems VW T4 024 701 / VW T5 024 706 / VW T6 024 708



LINEA MOUNTING KITS

ITEM No.: 021 107 — 021 155

For all Linea carrier bases. The specific mounting kits ensure a perfect, simple fit.

- 2 supports with coated vehicle specific tail gate clamps
- anti-theft protection
- completely preassembled



LINEA ALL-IN-ONE SYSTEMS VOLKSWAGEN T4, T5, T6,

T5 available with 2 bike rails
T4, T5 and T6 available with 3 bike rails.

VW T4 stainless steel: **ITEM No.: 024 701**

VW T5 stainless steel: **ITEM No.: 024 706**

VW T5 aluminium: **ITEM No.: 024 707**

VW T6 stainless steel: **ITEM No.: 024 708**



The tailgate can be opened even when the carrier is loaded.

TOW BAR MOUNTED BICYCLE CARRIERS

STRADA

This is what matters:
Safety, light weight and comfort.

Atera offers with ten Strada models
a uniquely wide range of products
with different price categories and features –
all in premium quality.



TOW BAR
MOUNTED
BICYCLE
CARRIERS

STRADA

- Atera Strada Benefits
- Tiltable / pull-out sliding
 - Quick fastening to tow bar
 - Wheel protection
 - Frame protection
 - Straps with ratchet
 - Easy positioning of tyres
 - Extension kits
 - Compact (starting from 1,0 m width)
 - Anodized aluminium
 - Pre-assembled
 - Theft protection for the carrier
 - Theft protection for the bikes
 - EC type approval
 - TÜV tested



	STRADA DL 2	STRADA DL 3	STRADA SPORT M 2	STRADA SPORT M 3	STRADA E-BIKE M	STRADA E-BIKE ML
Item number	022 600	022 601	022 684	022 685	022 686	022 696
Number of bikes	2	3	2	3	2	2
Number of e-bikes	2 ***	2 ***	2	2	2	2
Dimensions in mm (W x H x D)	1000 x 250 x 560	1000 x 250 x 720	1000 x 200 x 590	1000 x 200 x 720	1000 x 200 x 590	1200 x 200 x 590
Weight in kg	12,5 kg	14,5 kg	14,9 kg	18,1 kg	14,9 kg	15,8 kg
Maximum load, in kg ****	47 kg	45 kg	60 kg	66,9 kg	60 kg	59,2 kg
Maximum load for one bike rail, in kg	23,5 kg	23,5 kg	30 kg	30 kg	30 kg	30 kg (notice max. load of carrier)
Frame diameters in mm	25 - 80	25 - 80	25 - 80	25 - 80	25 - 80	25 - 80
Tyre width	up to 2.4"	up to 2.4"	up to 2.4"	up to 2.4"	up to 2.4"	up to 2.4"
Bicycle theft protection	yes	yes	yes	yes	yes	yes
Carrier theft protection	yes	yes	yes	yes	yes	yes
Lighting system	integrated, with fender	integrated, with fender	integrated, with fender	integrated, with fender	integrated, with fender	integrated, with fender
Plug connection	13-pin	13-pin	13-pin	13-pin	13-pin	13-pin
Base frame material	steel / aluminium	steel / aluminium	steel	steel	steel	steel
Bike rail distance	180 mm	180 mm	180 mm	180 mm	230 mm	230 mm
Bike rail number / quality	2 / matt anodized aluminium	3 / matt anodized aluminium	2 / matt anodized aluminium	3 / matt anodized aluminium	2 / matt anodized aluminium	2 / matt anodized aluminium
Lockable distance holders	2	3	2	3	2	2
Type approval	EC Type Approval	EC Type Approval	EC Type Approval	EC Type Approval	EC Type Approval	EC Type Approval
Warranty	3 years	3 years	3 years	3 years	3 years	3 years

EXTRA-WIDE
CARRIER

	STRADA DL 2	STRADA DL 3	STRADA SPORT M 2	STRADA SPORT M 3	STRADA E-BIKE M	STRADA E-BIKE ML
Extension Kits						
Item number	022 610	022 611	022 610	022 624	022 624	022 624
Bike rail / distance holder	1 / 1 long	1 / 1 bike to bike / lashing strap	1 / 1 long	1 / 1 short	1 / 1 short	1 / 1 short
Maximum total load in kg ****	45 kg	63 kg	67,9 kg	68 kg	67,9 kg	67 kg

Strada DL 2
Comfort carrier for two bicycles.
Extendable to 3 bikes.
Easy access to the boot thanks to the weight bearing roller system – comfortable and fast, whether loaded or unloaded.
Even vertical tailgates can be easily opened with the Strada DL.
An ultra light and extremely stable bicycle carrier.

Strada DL 3
Comfort carrier for three bicycles.
Extendable to 4 bikes.
Easy access to the boot thanks to the weight bearing roller system – comfortable and fast, whether loaded or unloaded. Even very big vertical tailgates of vans can be easily opened with the Strada DL 3.

Strada Sport M 2
High-Perormance carrier for 2 bicycles or 2 e-bikes.
Extendable to 3 bikes.
The tilting mechanism facilitates the fast access to the boot – whether loaded or unloaded. An ultra-light and stable bicycle carrier. Crash and double-lane change manoeuvre tested.
The optional drive-up rail enables the comfortable loading.

Strada Sport M 3
High-Perormance carrier for 3 bicycles or 2 e-bikes.
Extendable to 4 bikes.

Features see Strada Sport M2

Strada E-Bike M
High-Perormance carrier for 2 bicycles or 2 e-bikes.
Extendable to 3 bikes. The distance between the bike rails is 230 mm, plenty of space for drive unit or battery. Also the perfect choice for downhill bikes with wide suspension forks.

Features see Strada Sport M2

Strada E-Bike ML
Extra-Wide carrier for 2 bicycles or 2 e-bikes.
Extendable to 3 bikes.
The distance between the bike rails is 230 mm, plenty of space for drive unit or battery. Length of aluminium wheel rails 1,20 m. Perfect for all bikes with long wheelbase.

Additional features see Strada Sport M2.



TOW BAR
MOUNTED
BICYCLE
CARRIERS



STRADA

	STRADA EVO 2	STRADA EVO 3	STRADA VARIO 2	STRADA VARIO 3
Item number	022 700	022 701	022 750	022 751
Number of bikes	2	3	2	3
Number of e-bikes	2	2	2	2
Dimensions in mm (W x H x D)	1080 x 330 x 590	1080 x 280 x 735	1160 x 760 x 620 / 640 x 420 x 660	1160 x 710 x 760 / 640 x 480 x 760
Weight in kg	16,5 kg	19,8 kg	17,2 kg	20,9 kg
Maximum load in kg	60 kg	66 kg	60 kg	64,1 kg
Maximum load for one bike rail, in kg	30 kg	30 kg	30 kg	30 kg
Frame diameters in mm	25 - 80	25 - 80	25 - 80	25 - 80
Tyre width	up to 2.4	up to 2.4	up to 2.4	up to 2.4
Bicycle theft protection	yes	yes	yes	yes
Carrier theft protection	yes	yes	yes	yes
Lighting system	integrated	integrated	integrated	integrated
Plug connection	13-pin	13-pin	13-pin	13-pin
Base frame material	Steel / Aluminium	Steel / Aluminium	Steel / Aluminium	Steel / Aluminium
Bike rail distance	190 mm	190 mm	190 mm	190 mm
Bike rail number / quality	2 / matt anodized aluminium	3 / matt anodized aluminium	2 / matt anodized aluminium	3 / matt anodized aluminium
Lockable distance holders	3	3	2	3
Type approval	EC Type Approval	EC Type Approval	EC Type Approval	EC Type Approval
Warranty	3 years	3 years	3 years	3 years

Extension Kits

	022 710	022 711
Item number		
Bike rail / distance holder	1 / 1 long	1 / 1 bike to bike
Maximum total load in kg ****	60 kg	66 kg

Strada Evo 2

Innovative design carrier for 2 bicycles or 2 e-bikes.
Extendable to 3 bikes. Rear lights with modern clear-glass look – distinctive and extensive for better illumination and visibility for increased safety. High-grade aluminium distance holder frame equipped with detachable, lockable distance holders, which can be positioned freely. The roll bearing pullout is the new reverence concerning comfort and handling and impresses with its smooth operation especially when loaded.

Strada Evo 3

Innovative design carrier for 3 bicycles or 2 e-bikes.
Extendable to 4 bikes. Even very big vertical tailgates of vans can be easily opened with the Strada Evo 3.

Additional features see Strada Evo 2.



Strada Vario 2

The foldable masterpiece for 2 bicycles or 2 e-bikes.
Stunning look: The highlight for your safety are the distinctive clear-glass look rear lights. Extensive designed underrun protection with dual function: Safety and continuation of the dynamic line of the vehicle. Mounted on the car or stowed back again in the boot in a matter of seconds. High-grade aluminium distance holder frame equipped with detachable, lockable distance holders which can be positioned freely. The roll bearing pullout is the new reverence concerning comfort and handling and impresses with its smooth operation especially when loaded.



CARRYING BAG FOR VARIO 2
ITEM No.: 022 760

Black tear resistant polyester fabric with two short carrying handles & zip.

Strada Vario 3

The foldable masterpiece for 3 bicycles or 2 e-bikes.
Stunning look: The highlight for your safety are the distinctive clear-glass look rear lights. Extensive designed underrun protection with dual function: Safety and continuation of the dynamic line of the vehicle. Mounted on the car or stowed back again in the boot in a matter of seconds. High-grade aluminium distance holder frame equipped with detachable, lockable distance holders which can be positioned freely. The roll bearing pullout is the new reverence concerning comfort and handling and impresses with its smooth operation especially when loaded.

CARRYING BAG FOR VARIO 3
ITEM No.: 022 761

Wheel Protection

"Competence in professional cycling". It's appropriate for Atera to advertise this headline.

Atera particularly cares for the protection of the goods being carried.

The Atera wheel holders are deliberately formed like wheel-chocks in order to eliminate the enormous lateral, drag and shear loads. Thus the wheels are protected against any damage – a small detail with a big effect.

Frame Protection

Also the protection of the bike frame is an important matter for Atera.

Dents and scratches are often the result of non-professional fixing solutions and / or the use of cheap, hard materials, which are not appropriate to absorb high forces.

Atera is doing more to protect valuable bikes:
The lockable Strada distance holders can be swivelled and turned in each direction.
For the theft protection the ratchet straps are enforced with a steel core while the bike frame itself is held soft and secure by soft rubber cushions.



DRIVE-UP RAIL

ITEM No.: 022 635
Loading aid for all Strada DL, Strada Sport M and Strada E-Bike M and ML carriers.

ITEM No.: 022 741

Loading aid for all Strada Evo and Strada Vario carriers.

FOLDABLE DRIVE-UP-RAIL

ITEM No.: 022 742
Loading aid for all Strada models. Compact. Protected mounting rods. Folded in half.

STRADA WALL BRACKET

ITEM No.: 022 636
For space-saving storage of the carrier in your garage, basement, ...
Not suitable for Strada Evo and Vario.



wheel protection



pump fix system



folding concept

All Atera tow bar carriers have the EC Type Approval. The permissible maximum mass on the tow bar has to be at least 50 kilos with two bicycle 60 kilos with three bicycle

ROOF BOXES



ATERA CARGO/CERTO/FORMULA

Lowered Base

The lowered base not only provides additional space, but also the visual integration to the car and the drag coefficient show the value of Atera Certo roof boxes.

Dual-Side Opening

Mount them on the left of the roof, in the middle, or on the right. Atera roof boxes offer all-round comfort due to the dual side opening*.

*Except Cargo 810 and Certo 410

Dynamic Opening

Innovative, safe and comfortable. The knee lever mechanism supports the opening and closing of the box.



Stainless Steel Diffusor

More than an eye-catcher: The diffusor makes the aerodynamics of the Atera Formula series almost perfect.

Load securing

To make sure that your goods are securely tied down within the box, there are included lashing straps and integrated metal lugs.

Quick-Fix

- 1. PREMIUM-Fit**
After lifting the box onto the roof bars just turn the wheel of the Premium-Fit shut. By that the coated claws are closing safely around the cross bar, while the Premium-Fit is centred automatically. The torque indicator is giving audible and haptic feedback when the clamps have been tightened strong enough. The button locks the handwheel securely. Even with gloves the Premium-Fit can be easily operated. To protect the crossbars claws are rubber coated.
- 2. MASTER-Fit**
After lifting the box onto the roof bars just turn the wheel of the Master Fit shut. By that the coated claws are closing safely around the cross bar, while the Master Fit is centred automatically. The red button locks the handwheel securely. Even with gloves the Master Fit can be easily operated. To protect the crossbars claws are rubber coated.
- 3. COMFORT-Fit**
Optional fixation for the T-tracks of aluminium roof bars. Simple fixation invisible from outside; an alternative to the claw fixation around the roof bars. After the initial pre-mounting of the T-fixture to the box, the roof box can be easily slid into the T-tracks of the roof bars. The star grips are fastened from inside – and the box is securely fixed.



5 years warranty



TUV certified



city crash certified

ROOF BOXES

The Atera Cargo entry-level models are functional & practical. Atera Cargo boxes are available in two sizes and offer all you need for a relaxed journey.

- Highest safety.
- Easy mounting due to the Master-Fit System.
- Knee lever mechanism that supports the opening and closing.
- Integrated steel rail for safe fixation.
- Impact resistant ABS / ASA material.
- Lowered base for outstanding aerodynamics.
- Lowered distance to the roof to reduce wind noise.
- Lockable.
- Low weight.
- 5 years warranty.

The Atera Certo quality. Due to the patented Master-Fit the mounting of the box is child's play. Four Sizes —the perfect box for every purpose.

- Reduced warming due to the silver-coloured lid.
- Highest safety.
- Master-Fit
- Knee lever mechanism that supports the opening and closing.
- Integrated steel rail for safe fixation.
- Impact resistant ABS / ASA material.
- Lowered base for outstanding aerodynamics.
- Lowered distance to the roof to reduce wind noise.
- Central locking system.
- Low weight.
- 5 years warranty.

The exclusive Atera Certo Design roof boxes. Optimised aerodynamics combined with excellent loading capacity. The dual side opening lid guarantees the highest loading comfort. Additional features:

- Exclusive Look:
- Models in Brilliant Black with glossy surface
 - Model Titanium with fine structured surface
 - High quality ABS / PMMA material with highest UV-Resistance.
 - Highest safety.
 - Knee lever mechanism that supports the opening and closing.
 - Integrated steel rail for safe fixation.
 - Outstanding mounting comfort with Master-Fit system.
 - Lowered base for outstanding aerodynamics.
 - Dual side opening.
 - Central locking system.
 - Low weight.
 - 5 years warranty.

Atera Formla, the highest level in roof box aesthetics. The silver carbon surface shows from afar the bright characteristics of these high-end series. The streamlined shape guarantees a perfect aerodynamic and low noise emission. The diffusor ensures that the aerodynamics of the Atera Formula series is almost perfect. More than an eye-catcher:

- Unique glossy surface with silver carbon look
- High quality ABS / PMMA material with highest UV-Resistance.
- Knee lever mechanism that supports the opening and closing.
- Integrated steel rail for safe fixation.
- Excellent mounting comfort due to the Premium-Fit system with torque control.
- Lowered base for outstanding aerodynamics.
- Dual side opening.
- Central locking system.
- Low weight.
- 5 years warranty.

ATERA CARGO

ATERA CERTO

ATERA CERTO DESIGN

ATERA FORMULA



Model	ATERA CARGO 810	ATERA CARGO 830	ATERA CERTO 410	ATERA CERTO 420	ATERA CERTO 460	ATERA CERTO 560	ATERA CERTO 480	ATERA CERTO 480	ATERA FORMULA 980	ATERA FORMULA 990
Item number	082270	082273	082260	082261	082262	082263	082282	082264	082280	082281
Colour	Anthrazit	Anthrazit	Silver Metallic	Silver Metallic	Silver Metallic	Silver Metallic	Titanium, fine structured	Brillant Black	Silver Carbon	Silver Carbon
Material	ABS / ASA	ABS / ASA	ABS / ASA	ABS / ASA	ABS / ASA	ABS / ASA	ABS / PMMA	ABS / PMMA	ABS / PMMA	ABS / PMMA
Outer Dimensions L/W/H cm	142 / 82 / 42	178 / 78 / 42	149 / 98 / 42	178 / 78 / 42	192 / 82 / 42	216 / 91 / 44	192 / 82 / 42	192 / 82 / 42	191 / 80 / 37	215 / 88 / 37
Inner Dimensions L/W/H cm	137 / 76 / 41	173 / 73 / 41	144 / 93 / 41	173 / 73 / 41	187 / 77 / 41	211 / 86 / 43	187 / 77 / 41	187 / 77 / 41	186 / 75 / 36	210 / 83 / 36
Volume (Litre)	330	410	400	400	440	550	440	440	360	440
Empty weight (kg)	12	14	14,5	14,5	17,5	20,5	17,5	17,5	19	23,5
Maximum Load (kg)	75	75	75	75	75	75	75	75	75	75
Mounting	Master-Fit	Master-Fit	Master-Fit	Master-Fit	Master-Fit	Master-Fit	Master-Fit	Master-Fit	Premium-Fit	Premium-Fit
Opening	rear	right side	right side	on both sides	on both sides	on both sides	on both sides	on both sides	on both sides	on both sides
Locking System	1 Lock	Central locking system	Central locking system	Central locking system	Central locking system	Central locking system	Central locking system	Central locking system	Central locking system	Central locking system
Warranty	5 Years	5 Years	5 Years	5 Years	5 Years	5 Years	5 Years	5 Years	5 Years	5 Years
Reinforced bottom with metal rail	yes	yes	yes	yes	yes	yes	yes	yes	yes	yes
Look									with stainless steel diffusor	with stainless steel diffusor
Comfort fitting set (optional)	Item No. 082266	Item No. 082266	Item No. 082266	Item No. 082266	Item No. 082266	Item No. 082266	Item No. 082266	Item No. 082266	Item No. 082266	Item No. 082266



COMFORT FITTING
Optional.
For easy mounting in the T-Slot of aluminium cross bars. Theft-proof.

Roof Box Lift
Item No.: 082 195
Ideal for the storage of the roof box, e.g. in a garage. Simple mounting.

Features (all): Cargo lashing straps, lashing lugs, dynamic opening system, central locking, quick fix system to roof bars

SKI-/ SNOWBOARD- CARRIERS

NOVA



At the highest level.

Clear lines with the highest levels of user-friendliness, form and durability. For winter sports enthusiasts the Nova is a design classic that will prove itself again and again.

With its straightforward handling – even with thick gloves – the winter fun starts while loading. Simply Atera.

NOVA 4

ITEM No.: 082 724
Carrier for
1 Snowboard und 1 pair of skis
Or for up to 4 pair of skis

- **Width outside:** 570 mm
- **Loading width:** 400 mm
- for all roof racks
- complete preassembled
- height adapter for extreme high ski-bindings included
- elastic rubber, even at cold temperatures
- big push button
- snap-lock theft protection
- for steel cross bars 32 x 22 mm
- for all aluminium cross bars

NOVA 6

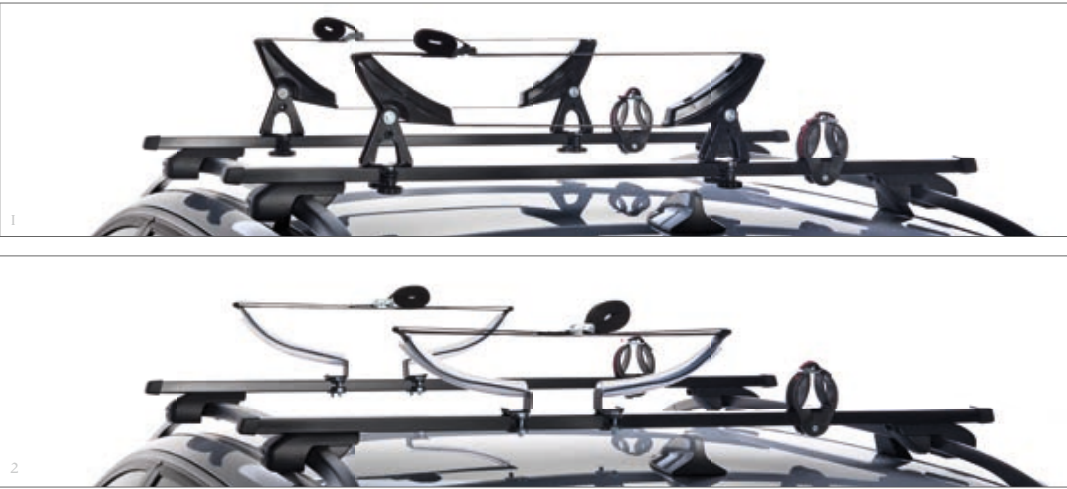
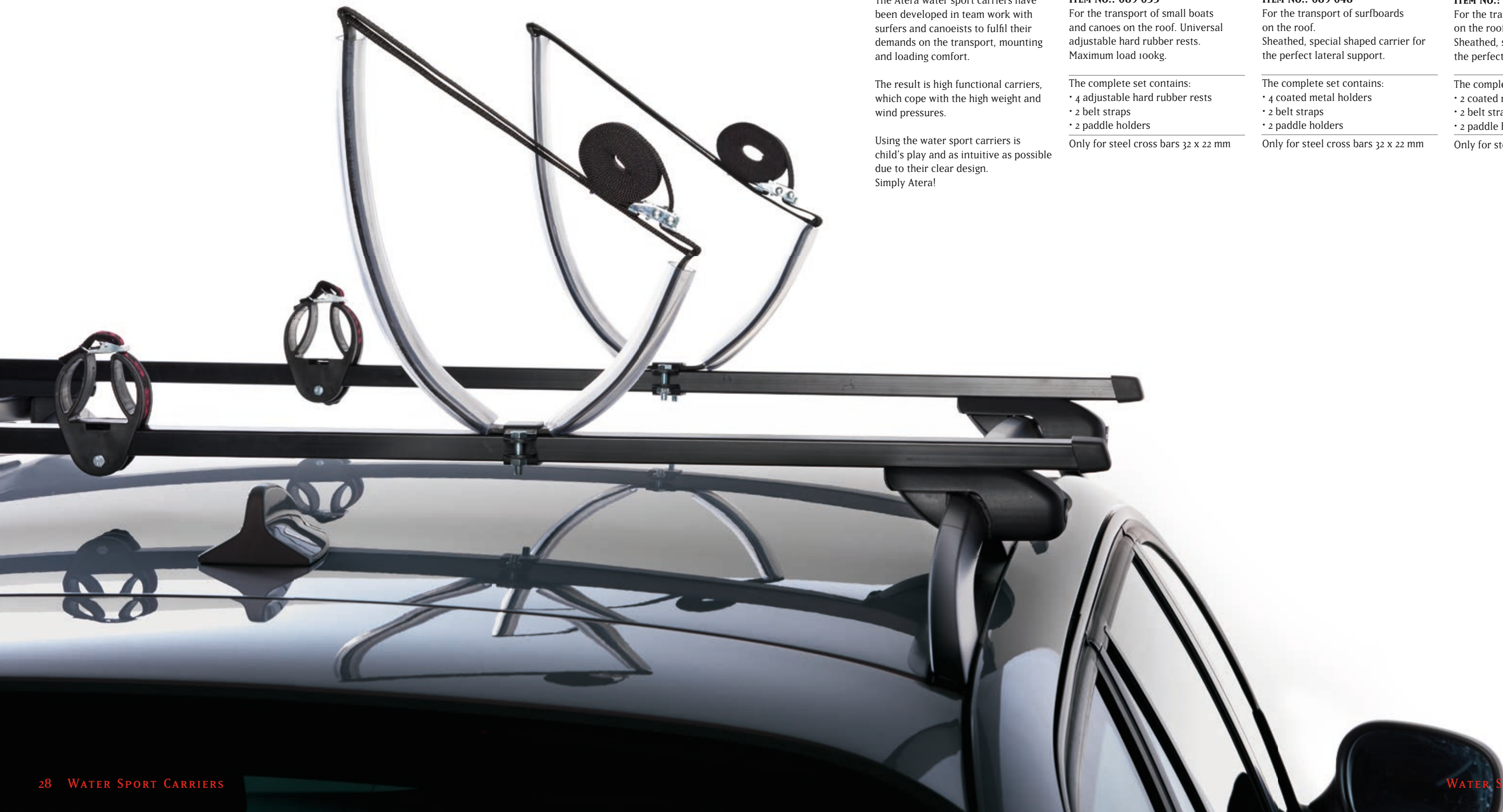
ITEM No.: 082 726
Carrier for
2 Snowboard und 1 pair of skis
Or for up to 6 pair of skis

- **Width outside:** 780 mm
- **Loading width:** 610 mm
- for all roof racks
- complete preassembled
- height adapter for extreme high ski-bindings included
- elastic rubber, even at cold temperatures
- big push button
- snap-lock theft protection
- for steel cross bars 32 x 22 mm
- for all aluminium cross bars



WATER SPORT CARRIERS

BOOT / SURF / KAJAK



All on board.

The Atera water sport carriers have been developed in team work with surfers and canoeists to fulfil their demands on the transport, mounting and loading comfort.

The result is high functional carriers, which cope with the high weight and wind pressures.

Using the water sport carriers is child's play and as intuitive as possible due to their clear design. Simply Atera!

BOAT CARRIER

ITEM No.: 089 033
For the transport of small boats and canoes on the roof. Universal adjustable hard rubber rests. Maximum load 100kg.

The complete set contains:
• 4 adjustable hard rubber rests
• 2 belt straps
• 2 paddle holders

Only for steel cross bars 32 x 22 mm

SURFBOARD CARRIER

ITEM No.: 089 048
For the transport of surfboards on the roof. Sheathed, special shaped carrier for the perfect lateral support.

The complete set contains:
• 4 coated metal holders
• 2 belt straps
• 2 paddle holders

Only for steel cross bars 32 x 22 mm

KAYAK CARRIER

ITEM No.: 089 049
For the transport of kayaks on the roof. Sheathed, special shaped carrier for the perfect lateral support.

The complete set contains:
• 2 coated metal holders
• 2 belt straps
• 2 paddle holders

Only for steel cross bars 32 x 22 mm

LOAD CARRIERS

ATERA WORK



To find the matching roof rack and cross bars, please check out our product finder on our web site www.Atera.de or our printed application list.

ATERA WORK LOAD BASKETS

For Transporters.
Plug-in and screw system.

- width: 1,25 / 1,40 / 1,65 m
- minimum basket length 1,60 m
- tube diameter 20,5
- zinc coated
- flat packed / compact shipping size
- perfect for long vehicles

FITTING KIT

ITEM No.: 089 025
For fixation of the load baskets to steel cross bars
1 Set = 4 pieces
Only for steel cross bars 32 x 22 mm
1 Set for two cross bars

ATERA WORK SL

For cars with rain gutter and high roof.

- ITEM No.: 081 978**
Height: 250 mm
- ITEM No.: 081 979**
Height: 300-350 mm
- ITEM No.: 081 980**
Height: 400-500 mm

- supports supplied in pairs
- cross bars must be ordered separately
- zinc coating
- with black plastic coating
- load capacity: max. 100 kg
- rubber coated clamping
- TÜV tested

ATERA WORK TWENTY

ITEM No.: 081 802
For vehicles with rain gutter and raised roof.

- supports supplied in pairs
- cross bars must be ordered separately
- for steel cross bars 32 x 22 mm
- zinc coating
- with black plastic coating
- load capacity pair of supports: max. 100 kg
- TÜV tested



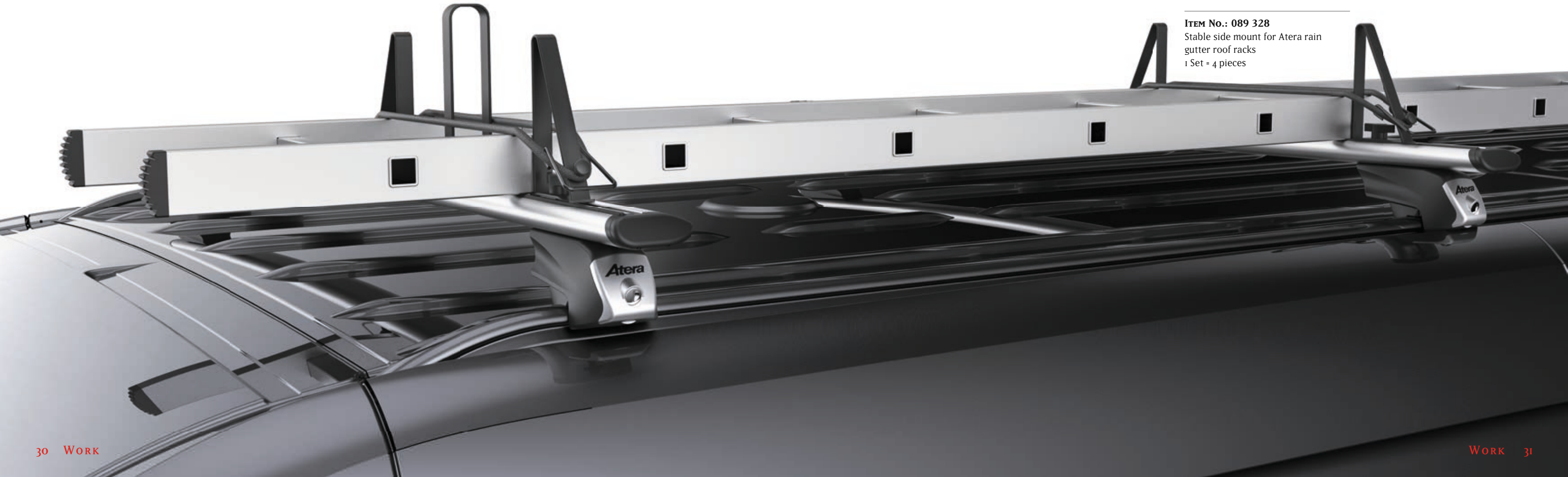
RAIN GUTTER SUBSTITUTE

ITEM No.: 089 328
Stable side mount for Atera rain gutter roof racks
1 Set = 4 pieces

ATERA WORK FIX RACKS

These racks are screwed directly on to the pre-installed fixing points.

- preassembled and ready to use out of the box
- made-to-measure
- loading width up to 150 cm
- protected against theft by special screws
- car paint protecting, coated clamping plates
- for steel bars, 32 x 20 mm
- for aluminium bars 57 x 30 mm
- TÜV tested



LOAD ACCESSORY



NEW



WORK

SMALL SUPPORT BRACKET

ITEM No.: 089 070

- for steel cross bars 32 x 22 mm
- double tubular steel bracket
- zinc coated
- 2 mm sheathing
- height: 130 mm
- 1 Set = 4 Brackets

LARGE SUPPORT BRACKET

ITEM No.: 089 071

- for steel cross bars 32 x 22 mm
- double tubular steel bracket
- zinc coated
- 2 mm sheathing
- height: 200 mm
- 1 Set = 4 Brackets

LADDER HOLDER

ITEM No.: 089 107

- for steel cross bars 32 x 22 mm

ITEM No.: 089 038

- for aluminium profiles with T-track
- formed flat steel
- zinc coated
- height: 180 mm
- easy mounting
- for two stepladders or one combination ladder
- 1 Set = 4 support angles
1 upper stop bar and 2 tensioners

HIGH ANGLE BRACKET

ITEM No.: 089 029

- for steel cross bars 32 x 22 mm

ITEM No.: 089036

- for aluminium profiles with T-track
- formed flat steel
- zinc coated
- height: 180 mm
- easy mounting
- 1 Set = 4 pieces

ANGLE BRACKET

ITEM No.: 089 024

- for steel cross bars 32 x 22 mm

ITEM No.: 089 037

- for aluminium profiles with T-track
- formed flat steel
- zinc coated
- height: 90 mm
- easy mounting
- 1 Set = 4 pieces

ROLLER FOR STEEL CROSS BARS

ITEM No. 082 309

- for steel cross bars 32 x 22 mm

ITEM No.: 082 310

- for aluminium profiles with T-track
- facilitates the loading of long goods
- synthetic roller
- easy mounting
- width 600 mm
- diameter 50 mm

CROSS CONNECTOR

ITEM No.: 089 510

- zinc coated
- to connect two steel cross bars 32 x 22 mm



UNIVERSAL GRIPPER

Gripper with textile strap for skis, paddles, surf masts, ...
With knurled screw

ITEM No.: 089500: 8 pieces

ITEM No.: 089501: 2 pieces



RATCHET STRAP TENSIONER

ITEM No.: 089 006

- strap length 4000 mm
- strap width 25 mm
- zinc coated ratchet



LASHING STRAPS

ITEM No.: 089 901 pic. 1

- length: 300 mm / Width: 17 mm
- stainless safety latch
- 4 Pieces

ITEM No.: 089 902 pic. 1

- length: 400 mm / Width: 17 mm
- stainless safety latch
- 4 Pieces

ITEM No.: 089 907 pic. 2

- length: 2500 mm / Width: 25 mm
- stainless safety latch
- 2 Pieces

ITEM No.: 089 908 pic. 2

- length: 4000 mm / Width: 25 mm
- stainless safety latch
- 2 Pieces.

DISTANCE HOLDERS STRADA

The Strada distance holders can be swivelled and turned in any direction. The bicycle frame is tightened perfectly to the distance holder by a padded and steel reinforced ratchet strap. The lock mounting is prepared. (The lock must be ordered separately)

ITEM No.: 022 630

- (Strada 1st holder) only DL Sport M, E-Bike
- length Alu-Tube: 30 mm

ITEM No.: 022 631

- (Strada 2nd holder) only DL and Sport M
- length Alu-Tube: 200 mm

ITEM No.: 022 632

- (Strada 3rd holder) only DL and Sport M
- length Alu-Tube: 380 mm

ITEM No.: 022 634

- (Strada 2nd holder) only E-Bike M
- length Alu-Tube: 250 mm

ITEM No.: 022 633

- bike to bike connection

DISTANCE HOLDERS LINEA

The Strada distance holders can be swivelled and turned in any direction. The bicycle frame is tightened perfectly to the distance holder by a padded and steel reinforced ratchet strap. The lock mounting is prepared. (The lock must be ordered separately)

ITEM No.: 099 518

- (Linea 1st holder)
- length Alu-Tube 140 mm

ITEM No.: 099 519

- (Linea 2nd holder)
- length Alu-Tube 320 mm

ITEM No.: 099 520

- (Linea 3rd holder)
- length Alu-Tube 490 mm

LOCK SETS

For distance holders and the Giro, Nova, Strada and Linea product series. One set comes always common locking.

ITEM No.: 083 008

- 1 lock + 2 keys

ITEM No.: 083 013

- 2 locks + 2 keys

ITEM No.: 083 010

- 4 locks + 2 keys

ITEM No.: 083 011

- 6 locks + 2 keys

ITEM No.: 083 012

- 8 locks + 2 keys

ACCESSORIES



WE HAVE BEEN DEVELOPING
CARRIER SYSTEMS FOR
MORE THAN 50 YEARS.

IN COOPERATION
WITH THE AUTOMOTIVE INDUSTRY
WE CONTINUOUSLY IMPROVE
THE SAFETY FEATURES
AND USABILITY.



SIGNS OF TRANSPORT COMPETENCE.

The straightforward product range with hands-on products to test brings Atera customers faster to the most appropriate transport solutions.

Therefore the best start to a journey is always with your Atera dealer; they know exactly what matters.

The perfect fitting carrier systems for your vehicle, service, fast deliveries, safety issues, ... whatever you've got on your mind – don't hesitate to call us:
Service hotline:
+49 75 61 - 98 344 1324

Those who follow the media will repeatedly come across positive reviews and recommendations for Atera products.

It might not say Atera, but many car manufacturers' own-brand equipment comes from Atera. Great functionality, continuous development and the respected production is highly appreciated by many of the leading vehicle manufacturers.

Atera products are designed in Germany. Manufactured in accordance to DIN ISO 75302, TÜV tested.

Atera products come with three years warranty on material and function. Five years on roof boxes.

According to the EU regulation DIN EN ISO 1135 all synthetic parts are completely recyclable. Our production meets the requirements of the German environment protection rules and is constantly monitored in order to ensure the compliance.

A comprehensive quality management system guarantees not only top quality products, but also ideal conditions for deliveries and trade.



ISO 14001
IAF certified

Environmental Management in accordance to System IAF. ISO 14001:2004 in development, manufacturing & sales.



e-bike
certified

Bike carrier recommendation for the transport of heavy e-bikes.



german
engineering

Professional design department based in Leutkirch im Allgäu, Southern Germany.



5 years
warranty

All Atera roof boxes come with a five years warranty.



german
design

Designed in Leutkirch im Allgäu – innovative, functional and award winning.



city crash
certified

Carrier and load are secured during frontal crash at 30 km/h and remain on the vehicle.



3 years
warranty

Atera products come with a three years warranty on material and function.



wheel
protection

Atera wheel holders are formed like wheel-chocks and secure a firm hold – even during exceptional driving manoeuvres.



TÜV
certified

Atera products are designed and manufactured in accordance to DIN ISO 75302 – TÜV tested.



pump fix
system

Wheel holders and distance holders are equipped with quick release ratchets – these ensure additional tensioning force.

A STATEMENT
FOR FREEDOM AND
INDEPENDENCE.



ATERA
CERTO DESIGN
TITANIUM



Product amendments as well as alterations to design and colour are possible after this catalogue went to press in April 2017. All products are offered subject to availability. Print related colour deviations are possible. For further details please check out our product finder on our web site www.Atera.de or our printed application list. Atera GmbH. Leutkirch im Allgäu. Germany. Service hotline: +49 75 61 98 344 1324

Item No. 750 834